



FJD Easy Control

User Manual



© FJ Dynamics Technology Co., Ltd. All rights reserved.

Safety Instructions

Before use, ensure that you have read and understood all the operation instructions and precautions in this manual.

Operator Requirements:

1. Do not drive if you are under the age of 18.
2. Do not drive the tractor under the influence.
3. Do not drive when you are fatigued.
4. Drivers must have the driving licenses required by the local laws.

Operating Environment Requirements:

1. During the area metering, drive in an open field far from the crowd and ensure that there are no irrelevant personnel and vehicles in the operation area.
2. Keep away from people, animals, obstacles, electric wires, tall buildings, airports, signal towers and other obstacles, to protect the operation from signal interference.
3. Avoid working in extreme weathers such as heavy rain, heavy fog, snow, lightning, and strong wind.

Other Requirements:

1. Disassembling the product without authorization may invalidate the warranty.
2. Damages caused by force majeure events, such as lightning strike, high voltage, and collision, are not covered by the warranty.
3. Use the device in strict accordance with the manual.

Copyright Notice:

FJDynamics reserves the copyright for this manual and all contents herein. No part of this manual may be reproduced, extracted, reused, and/or reprinted in any form or by any means without the prior written permission of FJDynamics.

This manual is subject to change without notice.

Preface

Purpose

This manual briefly describes how to use FJD Easy Control through simple and clear operation processes, so that users can learn to perform each operation easily, quickly, and accurately.

Technical Support

Starting from the date of purchase, you are provided with the technical support and upgrade services from FJ DYNAMICS INTERNATIONAL LIMITED.

Official website: www.fjdynamics.com

Contents

Chapter 1 Product Overview.....	1
1.1 Introduction.....	1
1.2 Product Diagram	1
Chapter 2 Components of FJD Easy Control	2
2.1 Components.....	2
Chapter 3 Operation Instructions	4
3.1 General.....	4
3.2 Using FJD Easy Control.....	4
3.2.1 Establishing Bluetooth Connection.....	4
3.2.2 Setting Buttons.....	6
3.2.3 Turning On/Off Auto Mode	7
3.2.4 Turning On/Off Area Metering	8
3.2.5 Drawing Guidance Line	9
Chapter 4 Appendix.....	10
4.1 Specifications.....	10

Chapter 1 Product Overview

1.1 Introduction

FJD Easy Control, a wireless remote control from FJDynamics, works with the company's autosteering system. It allows users to perform operations rapidly, such as turning on or off the auto mode, marking points A and B, measuring the covered area, and turning around, thereby improving user experience.

1.2 Product Diagram



Figure 1 Functions of the FJD Easy Control

Chapter 2 Components of FJD Easy Control

2.1 Components

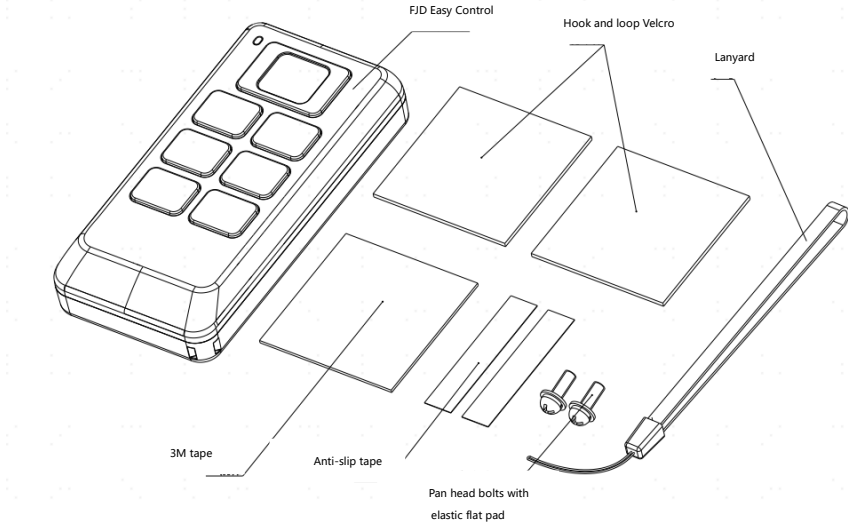


Figure 2 Components of FJD Easy Control

No.	Name	Function
1	FJD Easy Control	Allows users to perform operations such as turning on or off the auto mode and marking points A and B without using the control terminal.
2	Hook and loop Velcro	Fixes the FJD Easy Control.
3	3M tape	Fixes the FJD Easy Control.
4	Anti-slip tape	Prevents the FJD Easy Control from slipping.

5	Pan head bolts with elastic flat pad	Fixes the FJD Easy Control.
6	Lanyard	Hangs the FJD Easy Control.

Chapter 3 Operation Instructions

3.1 General

This chapter describes how to use the FJD Easy Control.

3.2 Using FJD Easy Control

3.2.1 Establishing Bluetooth Connection

Insert two AAA batteries into the FJD Easy Control, and then press and hold the two arrow buttons until the indicator in the upper left corner is lit. It stays on for 3 seconds and then blinks rapidly for 60 seconds. When the indicator blinks rapidly, go to the control terminal on the vehicle to pair with the FJD Easy Control.



Figure 3 Power on and prepare the FJD Easy Control

Turn on Bluetooth on the control terminal, find the FJD Easy Control from the available devices, and pair with it. The paired devices are saved automatically, so that no pairing is required in future operations.

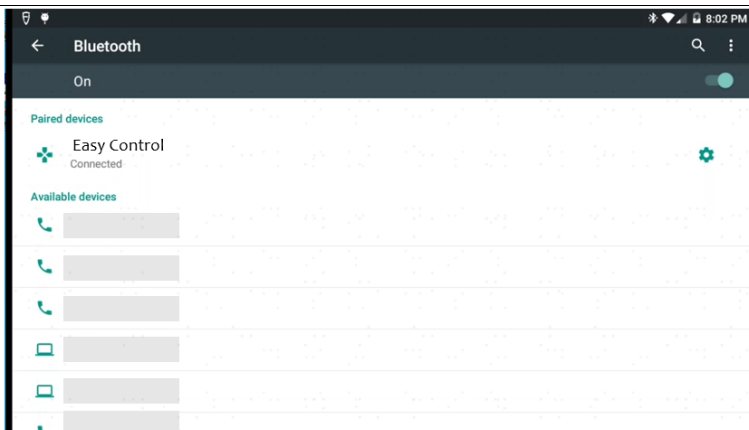


Figure 4 Pair with the FJD Easy Control on the control terminal

You may check the Bluetooth connection status through the icon in the upper left corner, as shown below.

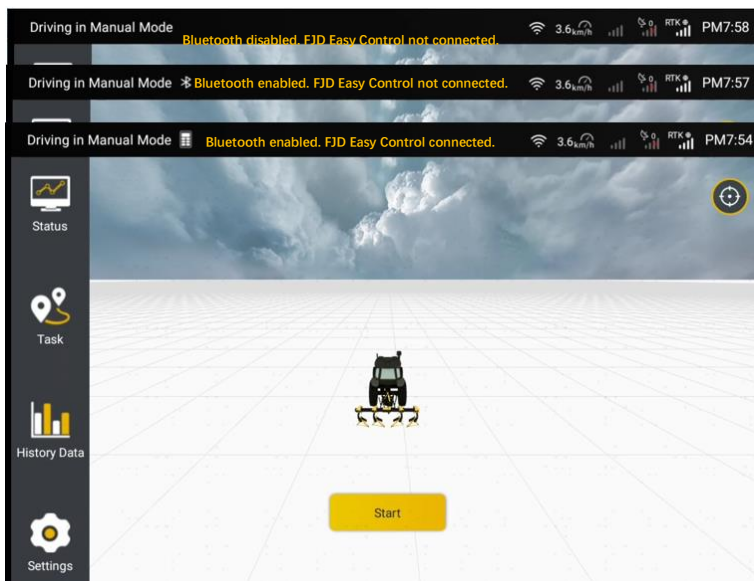


Figure 5 Bluetooth connection status

Bluetooth disconnection message: When the FJD Easy Control is disconnected, a popup

appears. It disappears if the FJD Easy Control automatically reconnects to the control terminal. If the problem persists, check the FJD Easy Control and the control terminal.

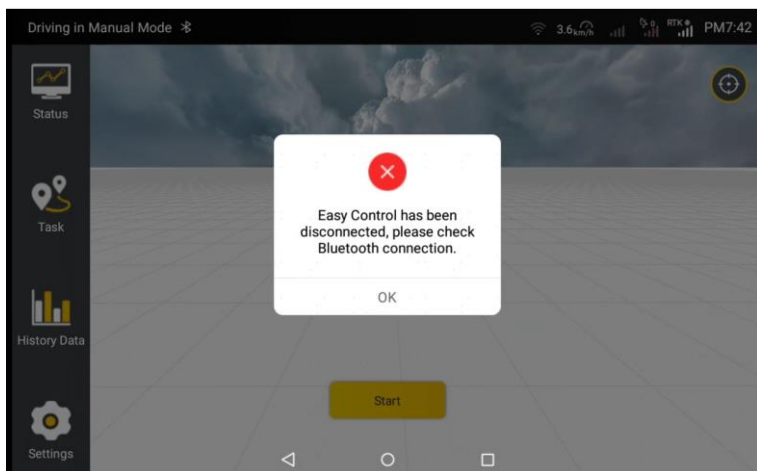


Figure 6 Bluetooth disconnected

3.2.2 Setting Buttons

On the control terminal, choose **Settings > Auxiliary Functions > Easy Control**.

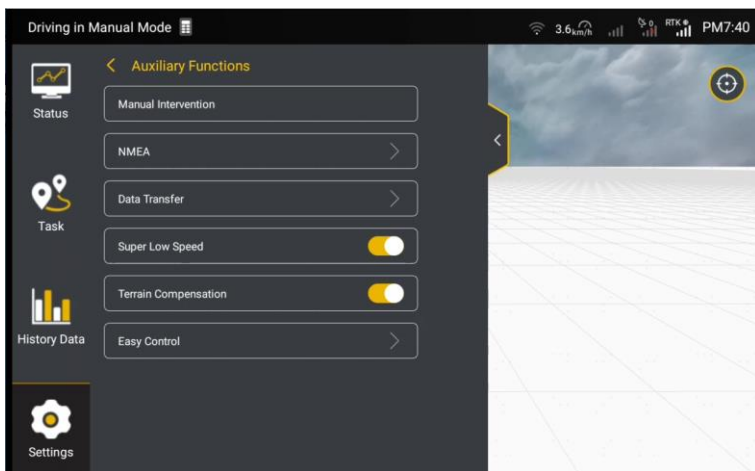


Figure 7 Choose Settings > Auxiliary Functions

You can view the device address and the button functions, and customize the function of

the  button.

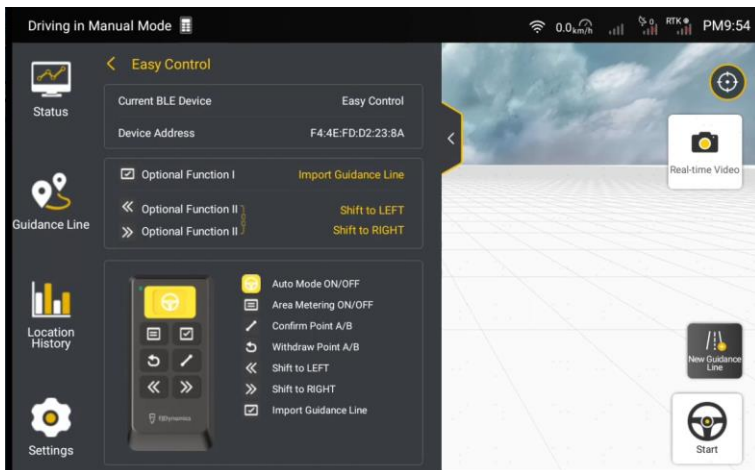


Figure 8 Easy Control screen

To configure the FJD Easy Control, Bluetooth connection is required.

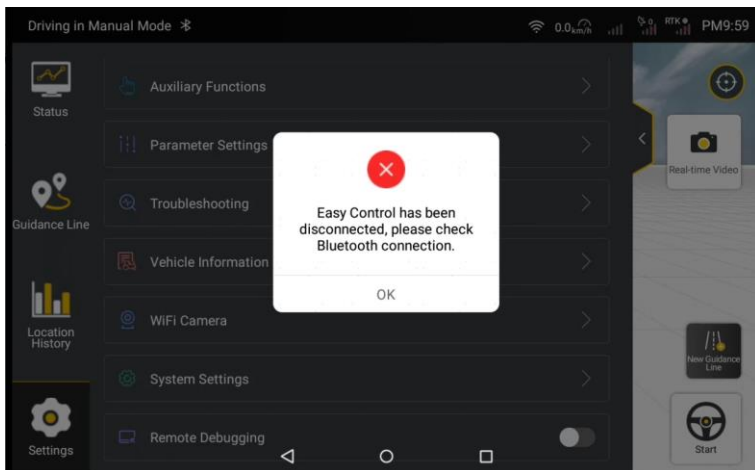


Figure 9 Bluetooth disconnected

3.2.3 Turning On/Off Auto Mode

When the operation screen is displayed, press the yellow button on the FJD Easy Control to

turn on or off the auto mode, as shown in Figure 10.

Note: Wait for at least 1 second before you press the button again.



Figure 10 Turn on/off auto mode

3.2.4 Turning On/Off Area Metering

Press the button on the FJD Easy Control to turn on or off area metering, as shown in Figure 11.

Note: Wait for at least 1 second before you press the button again.

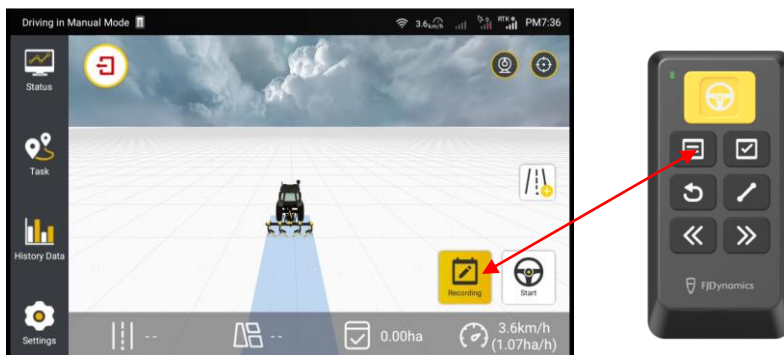


Figure 11 Turn on/off area metering

3.2.5 Drawing Guidance Line

1) Marking, canceling and saving points: Press the buttons on the FJD Easy Control to mark, cancel, and save points, as shown in Figure 12.

Note: Wait for at least 1 second before you press the button again.

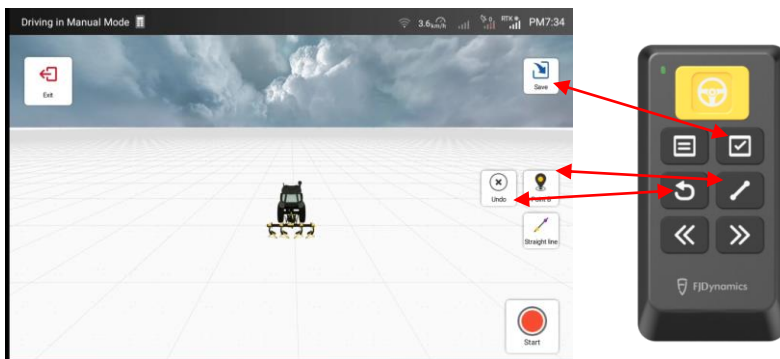


Figure 12 Guidance line

2) Naming the guidance line: To use the default name for the guidance line, press the button.

Note: Wait for at least 1 second before you press the button again.

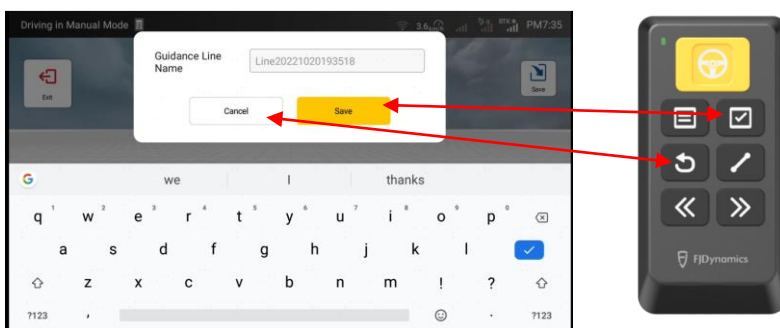


Figure 13 Name the guidance line

Chapter 4 Appendix

4.1 Specifications

FJD Easy Control	
Battery voltage	2.2 V–3.6 V (two AAA batteries)
Operating current	<7.0 mA
Humidity	20%–90%
IP rating	IP67
Storage temperature	-40°C to 85°C
Operating temperature	-25°C to 65°C
Dimensions	120 mm×60 mm×23 mm
Weight	98 g



© FJ Dynamics Technology Co., Ltd. All rights reserved.